

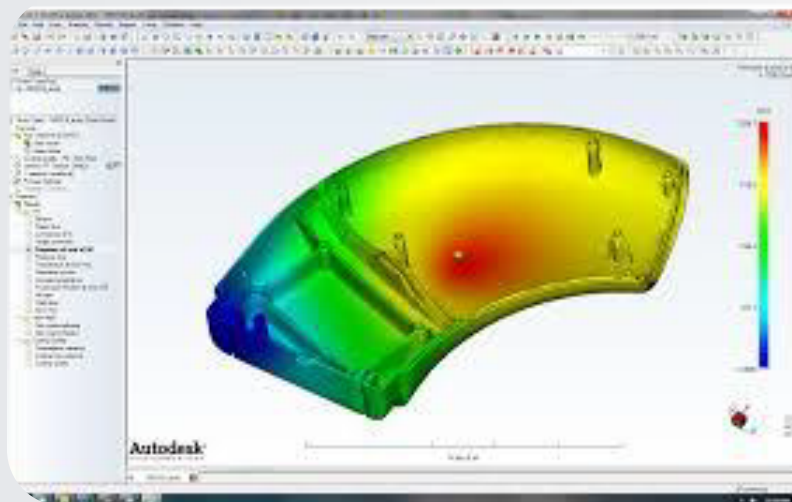
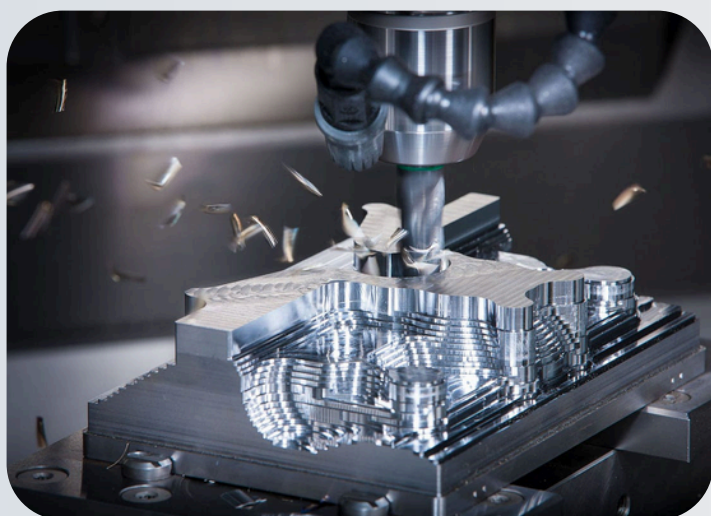


TEAM TECH SOLUTIONS

We Build Relations...

Precision Engineering Trusted Manufacturing

Precision-engineered moulds for every industry.



Design • Manufacturing • Installation

+91 9762210297 | 9890153743

teamtech12@gmail.com

www.teamtechindia.com

F9/21, Dynamic Industrial Society Opp. Fortuna, MIDC Ambad, Nashik 422010, Maharashtra, INDIA

-- Team Tech Solutions --

Who We Are

We are ISO 9001:2015 Certified, Professional Mould, Press Tools and Fixture manufacturing company, Based in Nashik, located 160 Km from Mumbai.



We Design, manufacture high quality Moulds and dies for wide range of industries that include, Instrumentation, Automobile, Luggage, Home appliances & Household products. In a short span we have established ourselves as a trusted quality manufacturer of Moulds due to our customer centric approach and customized solutions.

Advanced Moulding Solutions for Modern Manufacturing

TEAM

We are strong dedicated team of young professionals having rich experience in industry. Our industrial experts have total experience of 20 years in industry. With the backup of our skilled engineers we provide solution, on time support and deliver Moulds to customer's expectation

OUR APPROACH

Solution based approach to each customer need, our team of engineers have wide experience to understand your needs and propose cost efficient & optimized product design. With our in house designing and manufacturing facility you can be rest assured of quality and competitive pricing

VISION & MISSION

To emerge & establish as a customer centered company by manufacturing quality Moulds with reliable quality at competitive price with committed delivery..

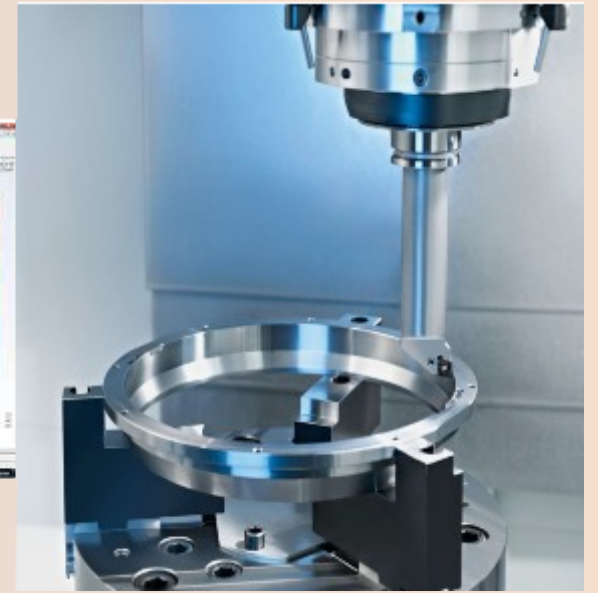
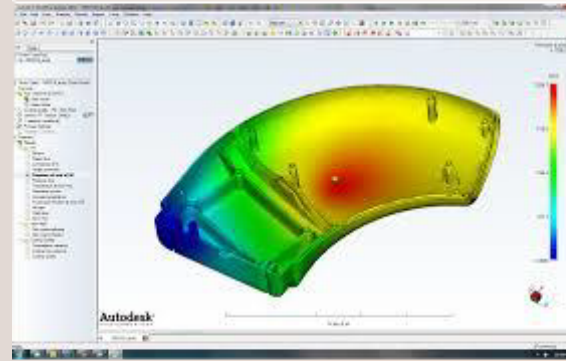
QUALITY POLICY

Our company is committed to delivering high-quality products and services that consistently meet or exceed customer expectations. We strive to achieve excellence through strict adherence to quality standards, continuous improvement, and customer-focused practices.

Our Services

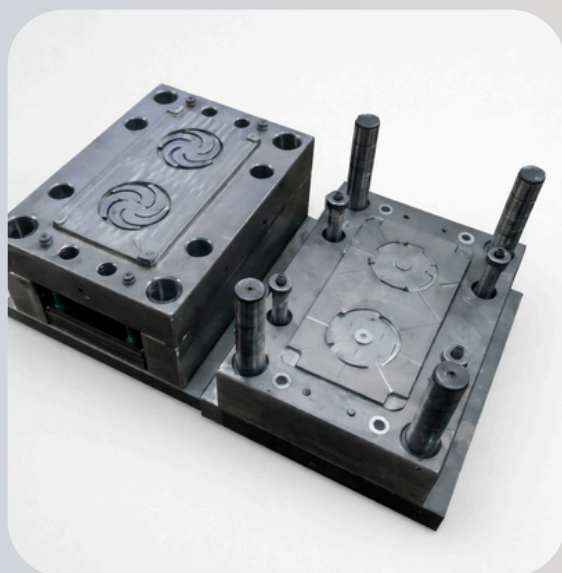
Solutions at single Point...

- Product Concept & Design
- Reverse Engineering and Prototyping
- Value engineering & DFMEA
- Tooling Development
- PPAP and Pilot Production

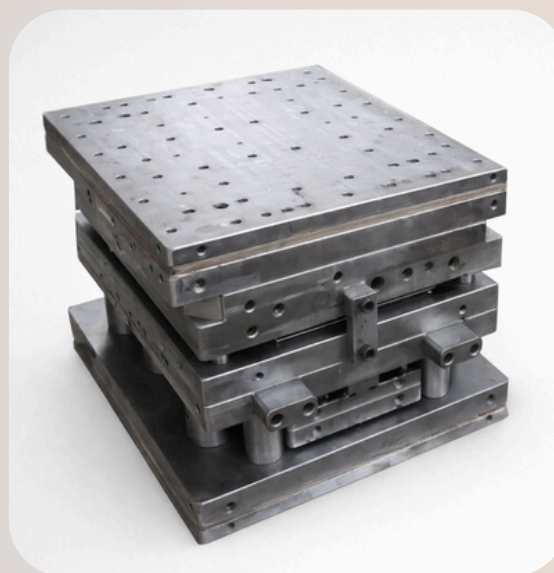


Our Products

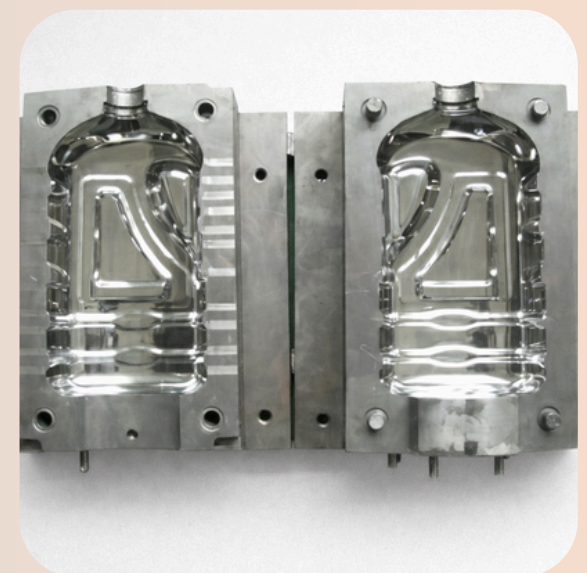
We manufacture a comprehensive range of precision moulds and tooling solutions designed for high-performance industrial applications. Our products are developed using state-of-the-art machinery and strict quality controls to ensure accuracy, strength, and long service life.



Injection Mould



Compression Mould



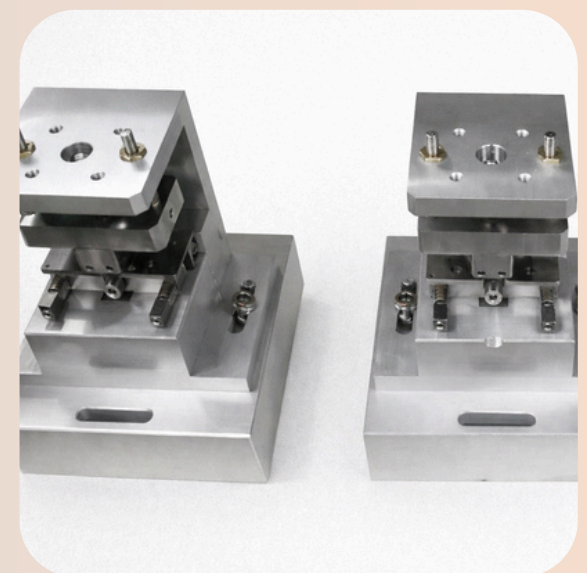
Die Casting Mould



Vacuum Moulds



Blow Moulds



Jigs & Fixture



Unscrewing & Gear Moulding



Value Engineering



Reverse Engineering

Manufacturing Facility



VMC COSMOS CVM 640



HSPK CNC EDM WITH C AXIS SPARKING



VMC COSMOS HAAS VF4



JOEMARS EDM 430



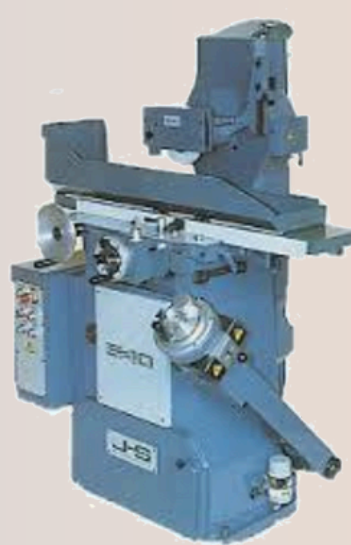
ELECTRONICA WEDM, JOB MASTER



ECOLINE EDM



TOSS MILLING MACHINE



JONES SHIPMAN SURFACE GRINDER



LATHE Machine

Measuring Facility



TOSS MILLING MACHINE



VISUAL MEASURING MACHINE



TRIMOS HEIGHT GAUGE

Production Facility



MOLDING MACHINE 150 T



MOLDING MACHINE 100 T



MOLD TEMPERATURE CONTROLLER

A) MODEL – NP 100 (SERVO)

- MOLD TEMPERATURE CONTROLLER
- SHOT WEIGHT (PS) - 181 gm.
- Dist. - Between Tie Bar - 410 x 410.
- Max. Mould Height - 450mm.

B) Two Core Pulling & Air Ejection B)

- MODEL – NP 150 (SERVO)
- SHOT WEIGHT (PS) - 371 gm.
- Dist. - Between Tie Bar - 515 x 515.
- Max. Mould Height - 530mm. • Two Core Pulling & Air Ejection



GRANULATOR

Why Choose Team Tech Solutions?

Complete Moulding, Tooling & Engineering Solutions

- Specialists in precision mould manufacturing including Injection, Compression, Die Casting, Blow & Vacuum Moulds
- Expertise in Unscrewing Moulds, Gear Moulds, Jigs & Fixtures for complex and high-accuracy applications
- Strong capabilities in Reverse Engineering for part redevelopment, optimization, and tooling support
- Use of high-quality raw materials, advanced machining, and proven manufacturing practices
- Experienced engineers and skilled technicians with strict adherence to quality and safety standards
- Timely project execution supported by thorough inspection, testing, and quality assurance
- Proven experience serving automotive, manufacturing, industrial, and engineering sectors

Powering Diverse Industrial Sectors



Automotive Industry



Luggage Industry



Electrical Industry



Medical Industry



Irrigation Industry



Household



Superior Build Quality

We follow strict quality standards and precision manufacturing practices to ensure durability, safety, and long service life.



Advanced Engineering & Design

Our designs are developed using modern engineering tools, optimized layouts, and industry-best practices.



Reliable & Customized Solutions

We provide tailored solutions to meet specific customer requirements across automotive, manufacturing, and industrial sectors.

Our Clients



Contact Details

Have a project in mind or need expert support for precision moulding, tooling, or engineering solutions?

Our team is ready to assist you with reliable, efficient, and customized manufacturing solutions tailored to your requirements.



GET IN TOUCH

Team Tech Solutions

Office & Factory Address
F9/21, Dynamic Industrial Society Opp. Fortuna, MIDC Ambad, Nashik 422010, Maharashtra, INDIA

+91 9762210297 | 9890153743

info@electrotechengineers.in

www.teamtechindia.com